

# SOLUTIONS FOR INSURANCE



## COMPANY PROFILE

**Satellogic specializes in Earth Observation data collection and analytical imagery solutions for insurance.**

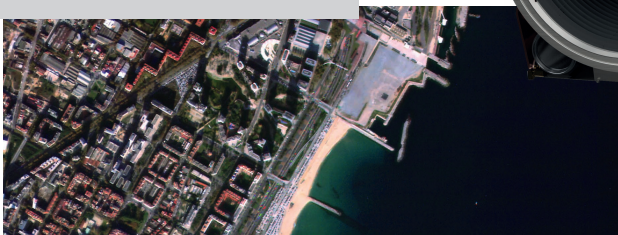
- Satellogic **designs, builds and operates its own fleet of Earth Observation satellites** to collect affordable high-resolution imagery with high recurrence for decision-making in a broad range of agricultural applications.
- Specialized in computer vision and big data analytics, Satellogic uses state-of-the-art artificial intelligence (AI) and proprietary algorithms to help agriculture professionals solve problems and meet their goals.

### MULTISPECTRAL CAMERA

Sub-meter Resolution

### HYPERSENSITIVE CAMERA

25-meter Resolution

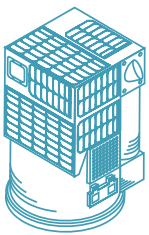




# FLOOD MONITORING

## UNIQUE MULTI SENSOR APPROACH

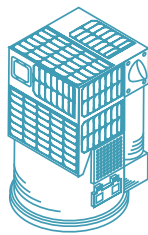
### RADAR



- Weather independent
- Wide area coverage
- 3D representations



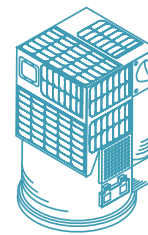
### OPTICAL



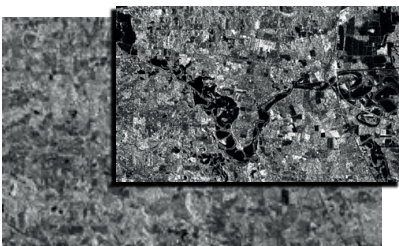
- Spatial and spectral information
- Visualization of damage
- Derived layers, e.g. land use



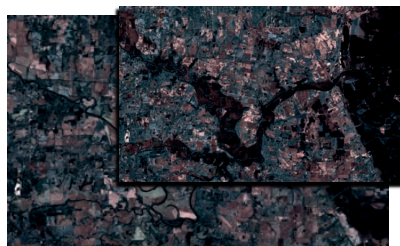
### OPTIONAL HIGH RESOLUTION



- On-demand
- Pinpointing of damaged areas
- Detailed examination of damage



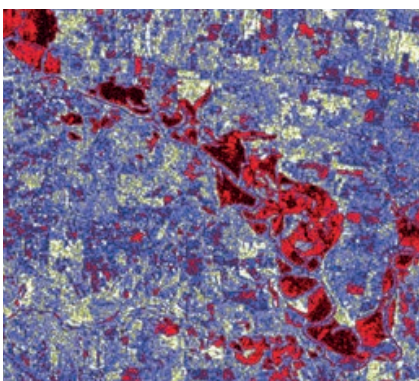
BEFORE AND AFTER RADAR DATA



BEFORE AND AFTER MULTI- AND  
HYPERSPSCTRAL DATA



ZOOM INTO AFFECTED AREAS



Satellogic's unique multi-sensor approach combines data from a variety of sources to create a flood mapping product that is superior in terms of accuracy of , reliability, coverage, response time and costs.

Optionally, high resolution imagery enables pinpointing affected areas and detailed assessment damages.

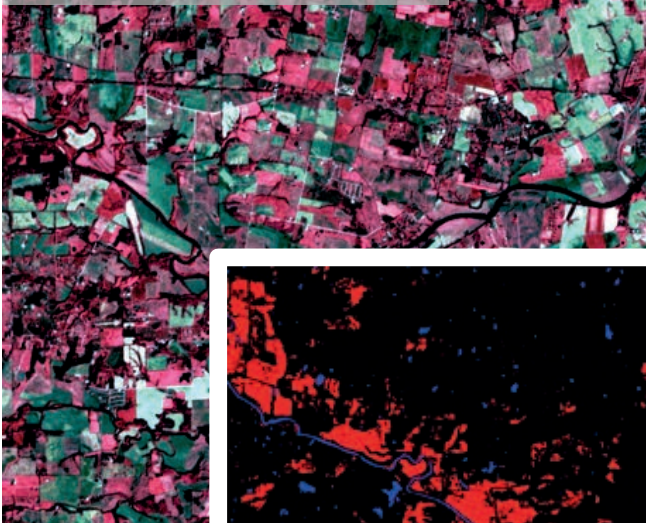
FLOOD MAP DERIVED FROM MULTI-SENSOR DATA FUSION



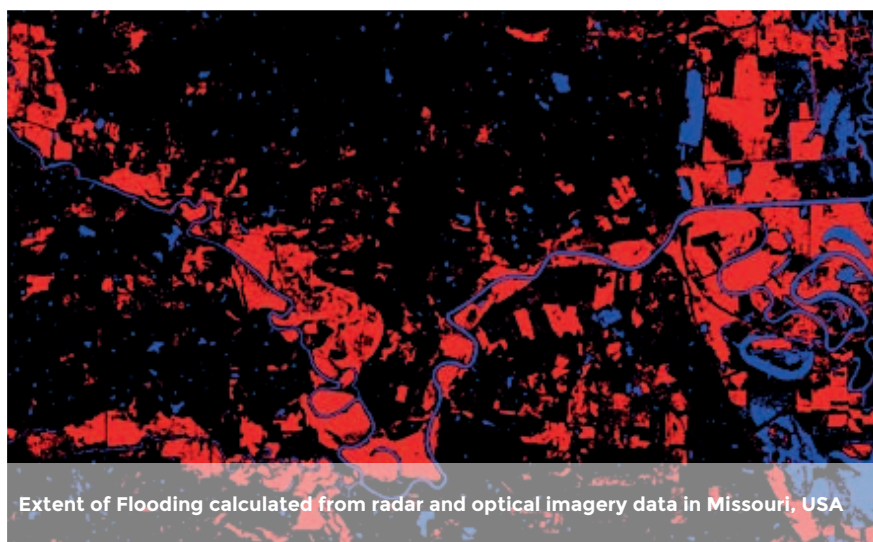
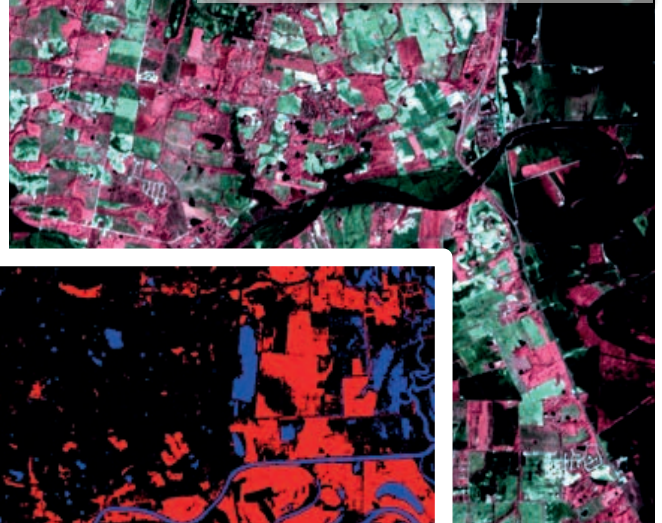
# FLOOD MONITORING

UNIQUE MULTI SENSOR APPROACH (CONT.)

Multispectral Image before Flooding

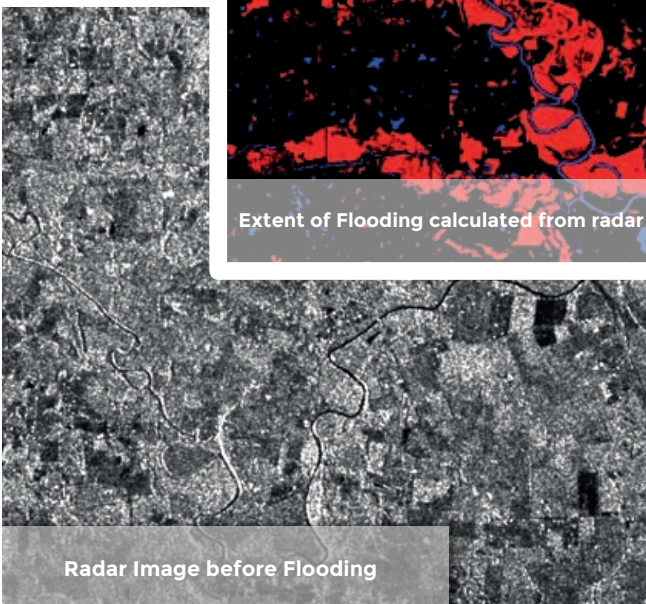


Multispectral Image after Flooding

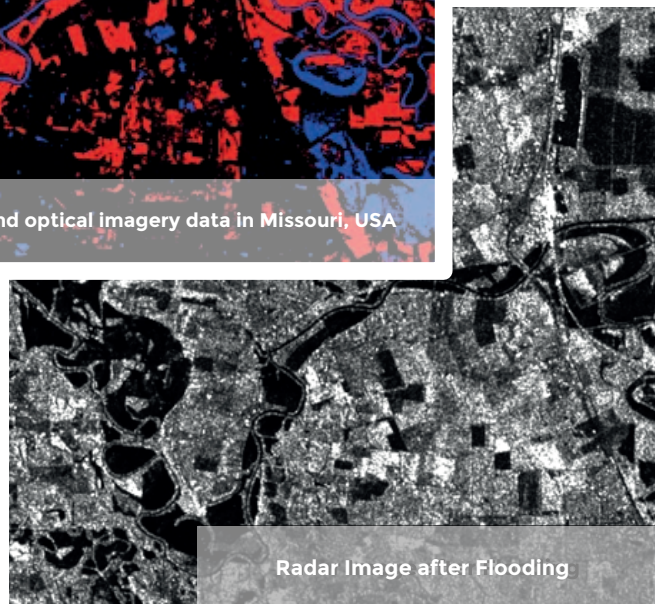


Extent of Flooding calculated from radar and optical imagery data in Missouri, USA

Radar Image before Flooding



Radar Image after Flooding





# FLOOD MONITORING

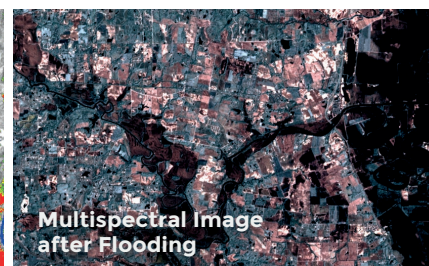
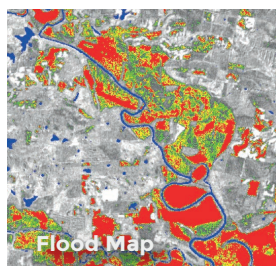
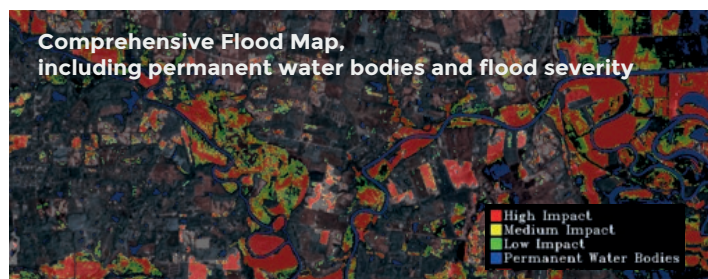
## FLOOD MAPPING AND MONITORING

### SOLUTION FEATURES:

- Accuracy enabled by **Optical and Radar Imagery**
- Automated identification of water bodies and soil moisture using state-of-the-art artificial intelligence
- Mapping of flood extent and impact (depth and duration of standing water)

### CLIENT BENEFITS:

- Verification of insurance claims
- Timely accurate assessment of flood extent and damage
- Risk model updates
- Low-cost market intelligence at your fingertip



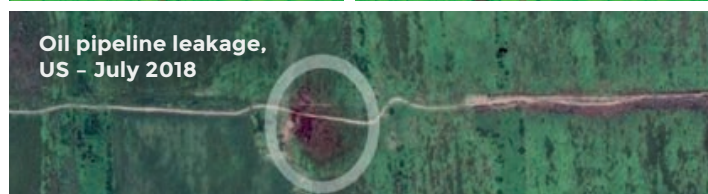
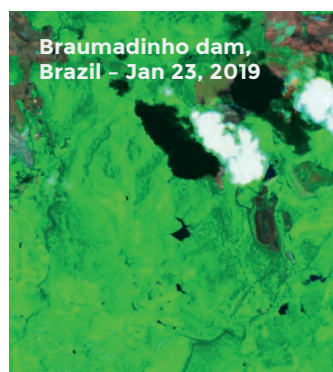
## RAPID EVENT RESPONSE

### SOLUTION FEATURES:

- Assessment of damage extent (area size, severity, description of affected area)
- Risk assessment of the affected and surrounding areas
- Mapping of natural disasters: flooding, landslides, etc

### CLIENT BENEFITS:

- Global response - even in remote areas
- Historic catalog of pre/post event
- Access to suitability analysis of areas prone to natural disasters
- Latency reduction between information and action





# FLOOD MONITORING

## SPECIFICATIONS

- **Data sources used:** multispectral optical, hyperspectral (29 bands) optical, radar
- **Ground resolution:** 10m, 1m starting Q4 2019
- **Temporal resolution:** 5-7 days
- **Deliverable:** flood map (percentage, severity)
- **Attributes:**
  - All weather solution
  - Multi-Sensor Approach
  - Wide area coverage
  - Global reach
- **Delivery:** via API or web app
- **Optional value adds:** Land Use/Land Cover, Crop type and health, impervious surface, infrastructure, etc

## BENEFITS

- Accurate and granular damage identification and assessment
- Risk assessment in areas in or adjacent to flood event
- Planetary scale allows responding to events in changing areas of interest
- Ability to leverage historical data for enhanced risk models
- Best-of-breed multi-sensor approach provides accuracy and robustness
- Satellogic analytics platform (Telluric) allows for automation and fast verification of insurance
- Low costs and full control leveraging Satellogic's vertical integration: from satellite design to tailored analytics



# OTHER INSURANCE APPLICATIONS

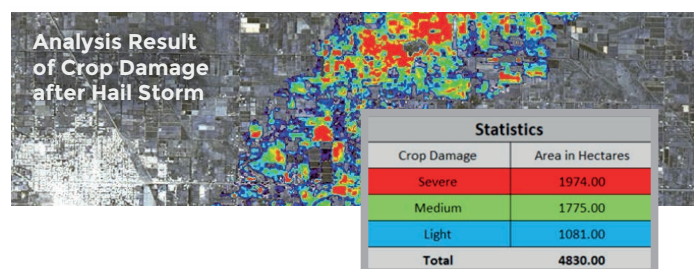
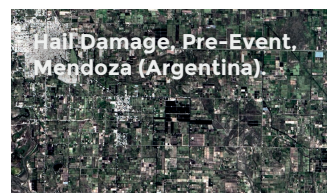
## CROP DAMAGE ASSESSMENT

### SOLUTION FEATURES:

- Detection and monitoring of crop damage
- Damage estimate per parcel
- Automated and scalable approach

### CLIENT BENEFITS:

- Before and after assessment of fields
- Highly accurate results
- Customizable online reports, including damage, area size, severity, field status before event, like crop type, growth stage (optional)



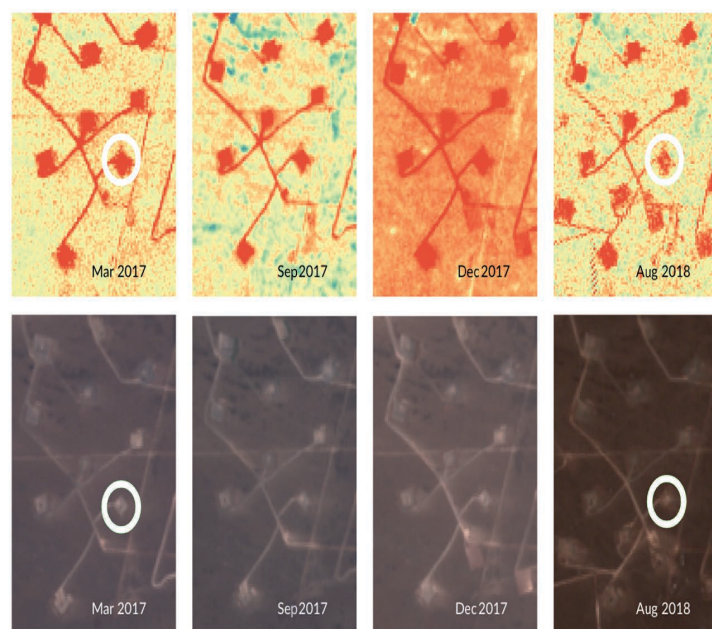
## ENVIRONMENTAL COMPLIANCE

### SOLUTION FEATURES:

- Vegetation recovery monitoring post location abandonment, or natural and man-made events
- Client selects areas of interest and receives recurrent reports for regulatory bodies

### CLIENT BENEFITS:

- Ability to supply concrete evidence of compliance with reclamation regulations
- Provide regulators with both visual and quantitative proof, at a low cost with no manual intervention
- Track evolution of applicable indices
- Directly embedded in reports



Evolution of abandoned well



# OTHER INSURANCE APPLICATIONS

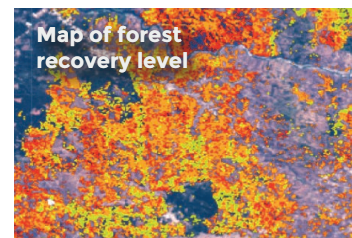
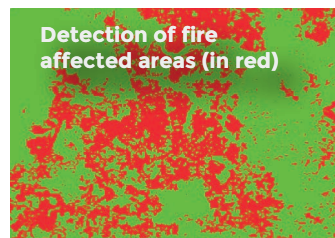
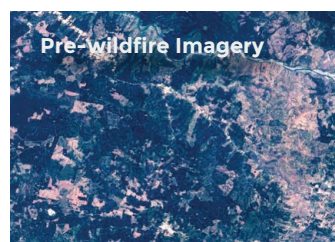
## WILDFIRE IMPACT ASSESSMENT

### SOLUTION FEATURES:

- Detect and map the area affected by all wildfires within days
- Monitor the recovery level of timber after the wildfires

### CLIENT BENEFITS:

- Cost-effective data for detailed decision making with fast turnaround time
- Assess impact and damage caused by the wildfire



USE CASE: ANALYSIS OF DEVASTATING JANUARY 2017 WILDFIRE THAT BURNED CROSS CHILE AND CAUSED SUBSTANTIAL ECONOMIC DAMAGE





# CONTACT US

FINANCE + BUSINESS  
DEVELOPMENT & SALES  
USA Hub

PRODUCT DELIVERY  
+ PLATFORMS  
Barcelona

HIGH THROUGHPUT PLANT  
Rotterdam

DEVELOPMENT TEAM

Córdoba

SATELLITE R&D + MISSION OPERATIONS  
Buenos Aires

PILOT PLANT  
Montevideo

[SALES@SATELLOGIC.COM](mailto:SALES@SATELLOGIC.COM)