

Port of Rotterdam, The Netherlands

SATELLOGIC®

EARTH OBSERVATION DATA FOR ASSET MONITORING

Access the best data from space with global tasking and industry-leading capacity.

Our high-resolution multispectral satellite imagery provides critical information at global scale. It is an essential commercial intelligence source for monitoring points of interest, critical infrastructure, and remote areas like refugee camps, energy corridors and pipelines, rural communities and industrial operations.

QUALITY

70cm multispectral
imagery (MSI) at 10m
CE90 accuracy
99cm native resolution

FREQUENCY

Up to 7 daily revisits
for points of interest

PRICE

Standard MSI
Tasking orders start
at \$8 per km²

Ask about rush and priority tasking

CAPACITY

30 satellites
currently in orbit*

CONSTELLATION

We aim to achieve 200+
in orbit for daily
global remaps

*Our constellation is continuously expanding.
Find the most up-to-date information at satellogic.com

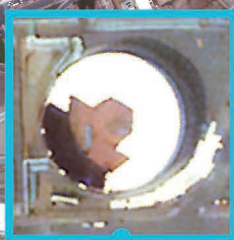
Fukushima Nuclear Power Plant, Japan

satellogic.com

Jeddah, Saudi Arabia

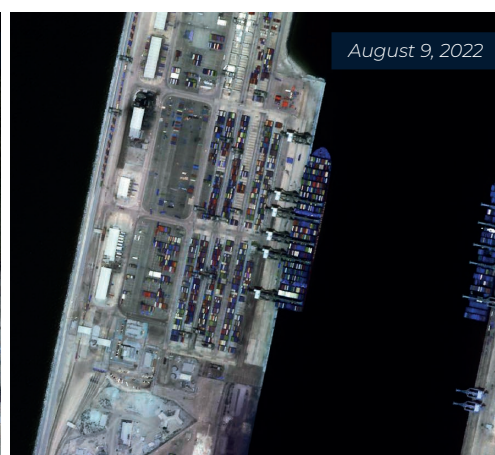
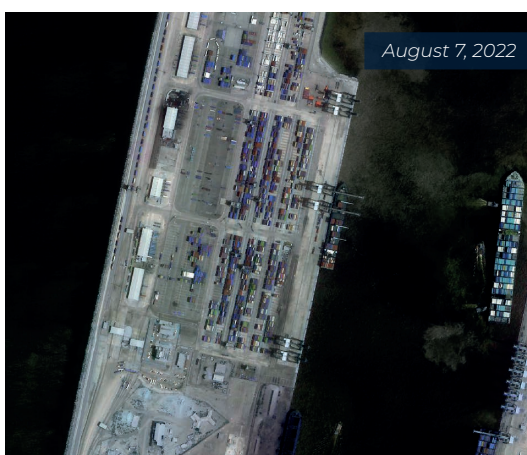
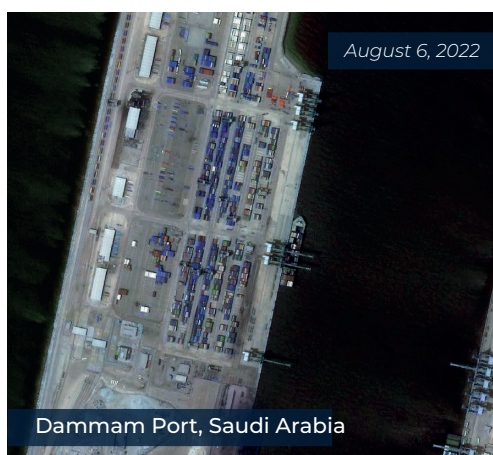
SATELLOGIC®

Damaged tank
at Aramco oil facility



INDUSTRY-LEADING CAPACITY FOR DIVERSIFIED TASKING NEEDS

Satelllogic operates the largest, commercial high-resolution Earth Observation satellite constellation in the world—and it is continuously growing. With frequent launches, customers gain access to more capacity as well as more tasking windows for continuous and timely monitoring of remote assets around the globe.



Optimize your analysis with affordable pricing, flexible licensing, and global capacity. With frequent launches deploying more satellites to our constellation, Satelllogic offers:

- Continuously increasing capacity for global coverage
- High-resolution, high-frequency multispectral imagery
- Flexible pricing and licensing to increase accessibility and drive innovation



Ruwais Refinery, United Arab Emirates

satelllogic.com